



Mullica Township School District

Janine Gentilini

Supervisor of Special Education and Student Services

jgentilini@mullicschools.com

609-561-3868 ext.129



DREAMS Initiative

DREAMS Initiative 2023-2024

Developing Resiliency with Engaging Approaches to Maximize Success

Partnership with Children's System of Care and Rutgers



- Approach that could help children, and adults with challenging behaviors.
- It's about emphasizing positive behaviors, and transforming those difficult and intense behaviors into abundant Inner Wealth. This helps to empower individuals and developing positive relationships between staff and students and learning how to self-regulate.
- Inner wealth is developed through positive behavior and supports children to build a positive outlook of themselves. It is a process that children develop when their hearts are nurtured by loving and consistent encouragement. It assists children with developing good judgment, and make good choices.
- Training in the Nurtured Heart Approach through a train-the-trainer model
- Promoting transformative trauma-informed and healing-centered method of improving positive relationships and engagement amongst both staff and students
- Focus building staff and students' relationships by providing safe and supportive learning environments.

DREAMS TEAMS



- Establish a District/School Leadership Team-WHO????
 - *Sept. 5, 2023 - DREAMS mentors (CSOC) presented to Mullica staff - volunteer to be part of the team
 - *Administrators, Guidance Counselors, Interventionist (Gabby Bock), Teacher (Elizabeth Tilsner), Aide (Mimi Morales)
- Establish team whose operating procedures include monthly meeting, team roles, and decision-making processes, etc.
 - *1st Meeting - Oct. 6, 2023 with DREAMS mentors (CSOC) and representative from State NJ
 - *2nd Meeting - Oct. 26, 2023 with DREAMS mentors (CSOC)
- Review existing procedures and practices comparing them to the values, philosophy, strategies of Nurtured Heart Approach and Trauma informed care emphasis to adapt an existing or develop a new goal or priority.
- Mentors will help us to establish shared understanding and knowledge of Trauma Informed Care (TIC) and Nurtured Heart Approach



**Mullica Township
School District**

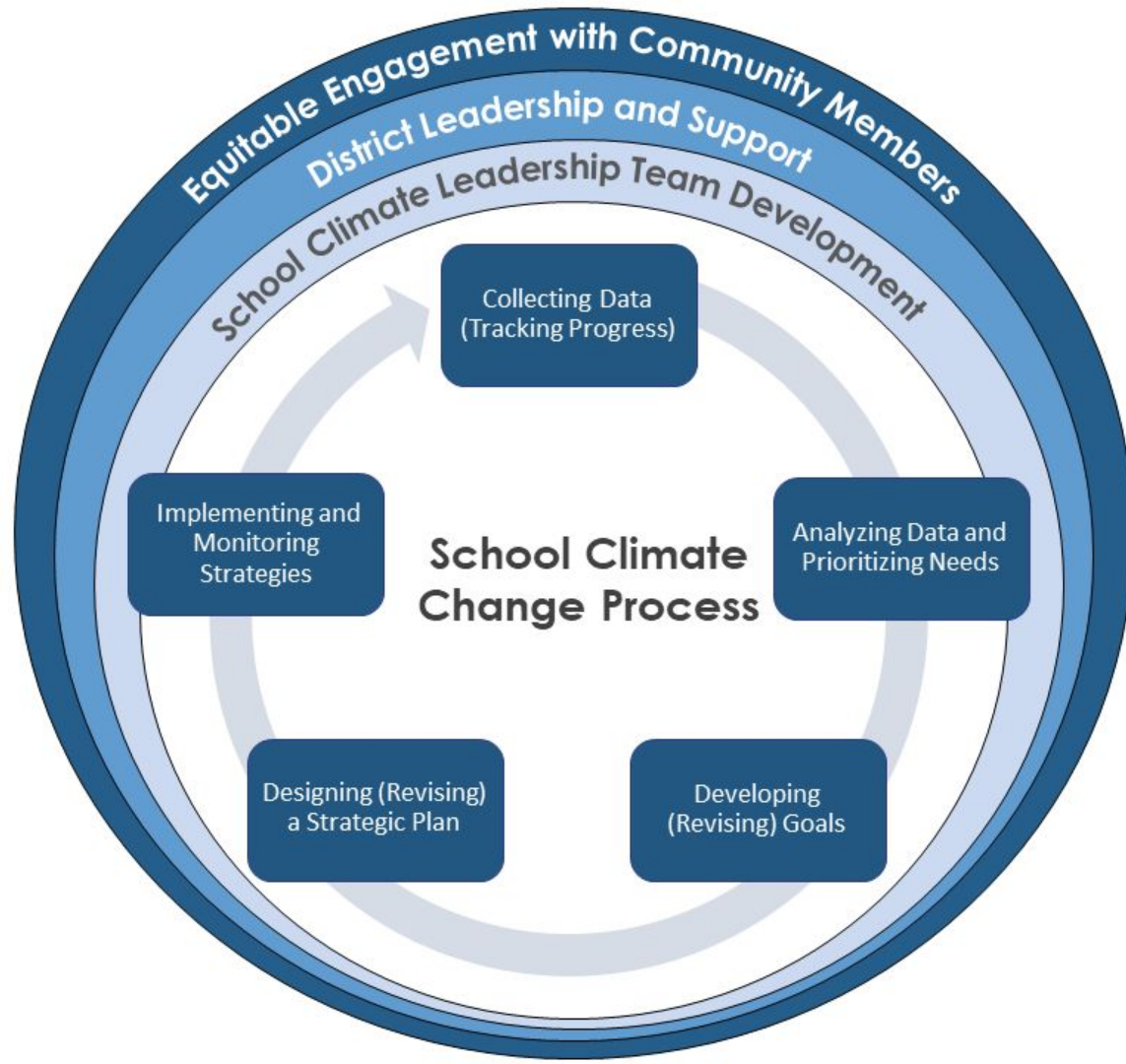
DATA



- **Review existing school data to identify needs/focus by utilizing the NJ School Climate Improvement Survey (NJSCI)**
 - **The New Jersey School Climate Improvement (NJ SCI) Survey was developed by the School Climate Transformation Project (SCTP) at Rutgers University in collaboration with the New Jersey Department of Education (NJDOE). The NJ SCI Survey is designed to help schools identify school climate strengths and needs and use data to create strategic plans to improve conditions for teaching and learning.**



**Mullica Township
School District**



Make A Plan



- **Develop action plan with mentors to support school/distinct goals**
 - **Identify readiness (school, grade, class, department, etc.)**
 - **CMO Parent Training in Nurtured Heart**
 - **SPED mini workshops**
 - **Day and/or evening trainings**
 - **Nurtured Heart Minute - teachers honoring other teachers for doing great things with our students**
 - **“Caught Being Good”**
 - **Mr. Weber’s Snippets**
 - **Bulletin Boards throughout the school promoting positive behavior expectations**
 - **Monthly Meetings - 2 X**
- **Develop a professional development plan for training and coaching to support healing centered and trauma informed practices for schools and NHA implementation**



**Mullica Township
School District**

Implement Strategies



Engage in mentor meetings to identify strategies and action steps

***Mentor Meetings take place 2X monthly - 1 hour each**

- **Promote shared knowledge, understanding and behavior expectations of staff and students**
- **Select two staff to become certified NHA trainers for the district**

***Mrs. Gentilini / BCBA**

***6 hour training in November**

***December 4-8 - 9:00-5:00 NHA Certified Training Intensive - via Zoom**

- **Have staff and leadership attend enrichment sessions**
- **Implement planned activities through the district/school**



**Mullica Township
School District**

Monitor Progress



Develop a process for collecting and reviewing data to ensure data-based decision making at district and school levels

- **Monitor the progress of our plan with our mentor**
- **Make changes to plan based on the data progress**
- **Mid grant and year end check in with CSOC**
- **Capture our success in action plan summary**
- **Celebrate our success!!!**
 - **Recognize admin, staff and students**
 - **Showcase Success**
 - **May 31st - Online School Presentations - via Zoom**



**Mullica Township
School District**

Mullica Township Child Study Team Case Managers

Janine Gentilini – Supervisor of Special Education and Student Services Extension 129

Dr. Brianna Fonte – School Psychologist – Preschool-Grade 1 Extension 130

Nellie Aponte – Learning Disabilities Teacher Consultant – Grades 2-5 Extension 128

Loretta Becker – School Social Worker – Grades 6-8 Extension 131

Allison Bell – Speech/Language Pathologist Extension 226

Melissa Miller – Child Study Team Secretary Extension 144



**Mullica Township
School District**